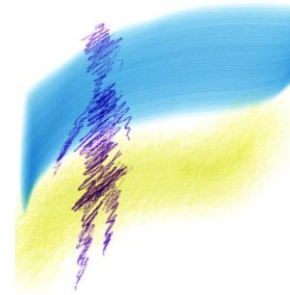


Work continues!



Fourth Action
'promoting equality within communities'

North Northumberland
Women's Network



If you would like more information about this project or would be interested in training or volunteering contact;

hala@nnwn.org

Ph: 01668 219879 Mobile: 0770 8064656

Or have a look at the website www.nnwn.org for publicity on most recent activities.

This project has been supported by a range of funders including:

Coalfields Regeneration Trust 2007-2008

Leader + 2008-2009

Supporting Communities - Community Grants 2009-2010

Northumberland County Council 2011

Women's Workshop Self build Project

Where are all the women then?

Women are currently severely under-represented in construction and manual trades within Northumberland, with young women occupying only 1% of available places on vocational training within the county.



This project recognises that the construction industry culture is a difficult one for women to access, and offers a women-friendly route into manual trades, through self build of a small structure and related training and enterprise support. It also offers women the opportunity to develop their DIY skills and consequently their confidence in a supportive and supervised environment. The building, when complete will be used as a community space that will support associated activities of the project.

The Women's Workshop is a partnership project led by Fourth Action, with Mary Kelly, Walter Segal architect. It provides both a physical space and an educational presence, built by women to create more equal access and participation to the construction and manual trades field, with a particular focus on rural women. It offers opportunities for skills development via accredited training and volunteering opportunities, confidence building, and enterprise support and development.



Future Plans ...

We aim to continue to offer bespoke accredited training opportunities for women that will include development of heritage skills and environmental activities i.e. dry stone walling; green woodworking; basic hut building; straw bale construction development of a vegetable garden and environmental arts activities .